



LUTZE offers components and solutions for the Industrial Internet of Things (IIoT), designed to seamlessly integrate into industrial applications while enhancing safety and efficiency. LUTZE's DIN rail mountable control components improve reliability and productivity in industrial applications.

- ELECTRONIC CIRCUIT BREAKERS
- UNMANAGED ETHERNET SWITCHES
- POWER SUPPLIES
- RELAYS



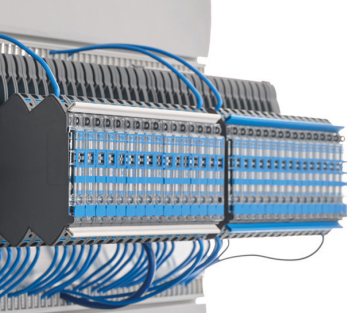
LUTZE CONTROL SOLUTIONS FOR INDUSTRIAL AUTOMATION

IMPROVE RELIABILITY AND EFFICIENCY

LUTZE Inc.
13330 South Ridge Drive
Charlotte, North Carolina 28273

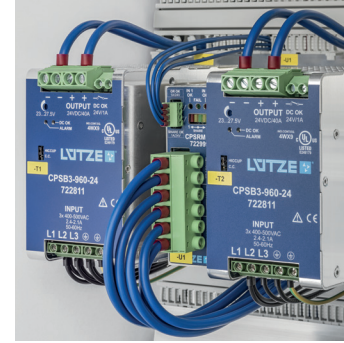
1-800-447-2371
info@lutze.com
www.lutze.com

ELECTRONIC CIRCUIT BREAKERS



- LOCC-Box and LOCC-Box Mini (standard and networkable units)
- Adjustable current range (1-10A)
- Patented adjustable characteristic curves: fast, medium, slow 1, 2 and 3
- Output alarm signal at 90% of load setting
- Output trip alarm
- LED status indicator ON/OFF/ALARM
- Remote ON/OFF/RESET and status monitoring

POWER SUPPLIES



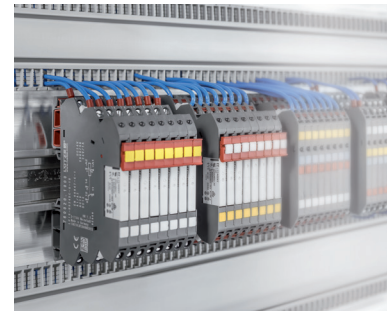
- For inductive, resistive, and highly capacitive loads
- Input: 1-phase, 3-phase and universal 1, 2, 3-phase options
- Output power ratings from 20 W to 2400 W
- Very compact design
- Efficiency up to 95.9%
- Parallel and redundant operation possible
- Redundant and UPS models

UNMANAGED ETHERNET SWITCHES



- Redundant AC/DC wide range supply DC 12-48 V, AC 24 V
- Ethernet Switches with 5, 8, and 16 ports
- Transmission speeds available in 100Mbit/s and 1Gbit/s
- PoE+ Switches with 4 and 8 ports
- Expanded temperature range -40 - +75 °C
- Intelligent energy management
- SFP ports for fiber optic connections

RELAYS



- Electromechanical (EMR): SPDT, DPDT, 4PDT
- Solid state (SSR)
- AC/DC inputs
- Narrow housing width of 6.2 mm – 31 mm
- Pluggable or non-pluggable relay housing options
- LED status indicator
- Clear identification of terminal markings to reduce risk of wiring errors